

2a Linnet Lane, Liverpool, L17 3BG

SellMyHome are proud to present to market this ideal one-bedroom, ground-floor apartment located in Sefton Park, Liverpool.

The property briefly comprises a modern interior offering a welcoming hallway, open plan living room/kitchen, double bedroom and three-piece family bathroom.

Ideally situated between both Sefton Park & Princes Park, the property further benefits from local amenities closely including Co-Op Food, School Bellerive FCJ Catholic College and easy commute routes.

We highly recommend an internal inspection to truly appreciate the property, please contact the SellMyHome team to book in your viewing appointment.

Tenure: Leasehold
Lease Term Remaining: 242 Years

Offers In Excess Of £90,000

2a Linnet Lane

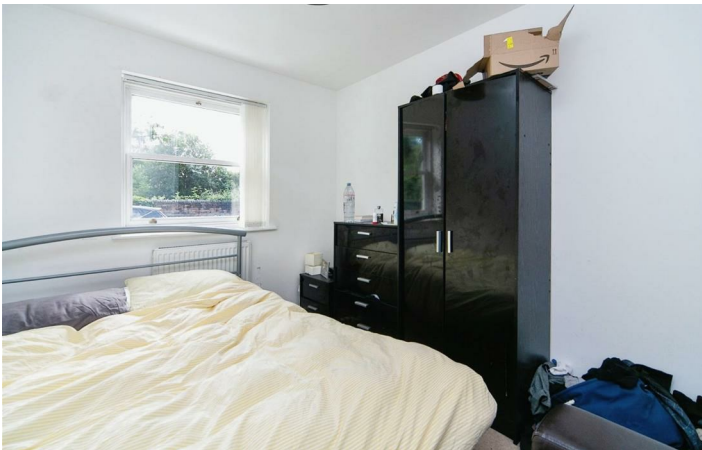
, Liverpool, L17 3BG



- Modern Ground Floor One Bedroom Apartment
- Sought After Location
- Ideal For First Time Buyers or Investors
- Good Condition Throughout
- EPC Rating - C
- Tenants In Situ
- Vacant Possession Available



Directions



Floor Plan



Total floor area 26.9 sq.m. (290 sq.ft.) approx

This floor plan is for illustrative purposes only. It is not drawn to scale. Any measurements, floor areas (including any total floor area), openings and orientation are approximate. No details are guaranteed, they cannot be relied upon for any purpose and they do not form part of any agreement. No liability is taken for any error, omission or misstatement. A party must rely upon its own inspection(s). Powered by www.focalagent.com

These particulars, whilst believed to be accurate are set out as a general outline only for guidance and do not constitute any part of an offer or contract. Intending purchasers should not rely on them as statements of representation of fact, but must satisfy themselves by inspection or otherwise as to their accuracy. No person in this firms employment has the authority to make or give any representation or warranty in respect of the property.

